

\$10,440,000 - 3206 Preston Dr, Midland

MLS® #50075307

\$10,440,000

Bedroom, Bathroom, 69,516 sqft
Commercial Sale on 0.00 Acres

N/A, Midland, TX

INVESTOR PORTFOLIO SALE INCLUDING 39 TENANT OCCUPIED & VACANT PROPERTIES! MAJORITY OF THE HOMES ARE 3 BED/ 2 BATH DUPLEXES OR TOWNHOMES WITH SOME AS 4 BEDROOM & 2 BEDROOM. SELLER IS SELLING THE ENTIRE PACKAGE AS A BUNDLE. GREAT INVESTMENT OPPORTUNITY w/COMMITTED PROFIT! NUMEROUS STREETS w/MULTIPLE HOMES IN GREAT RENTAL AREAS! STREETS INCLUDE: DENTCREST, ELMA, PRESTON, SCHARBAUER DR, SHELL & WHITTLE WAY AND MORE!

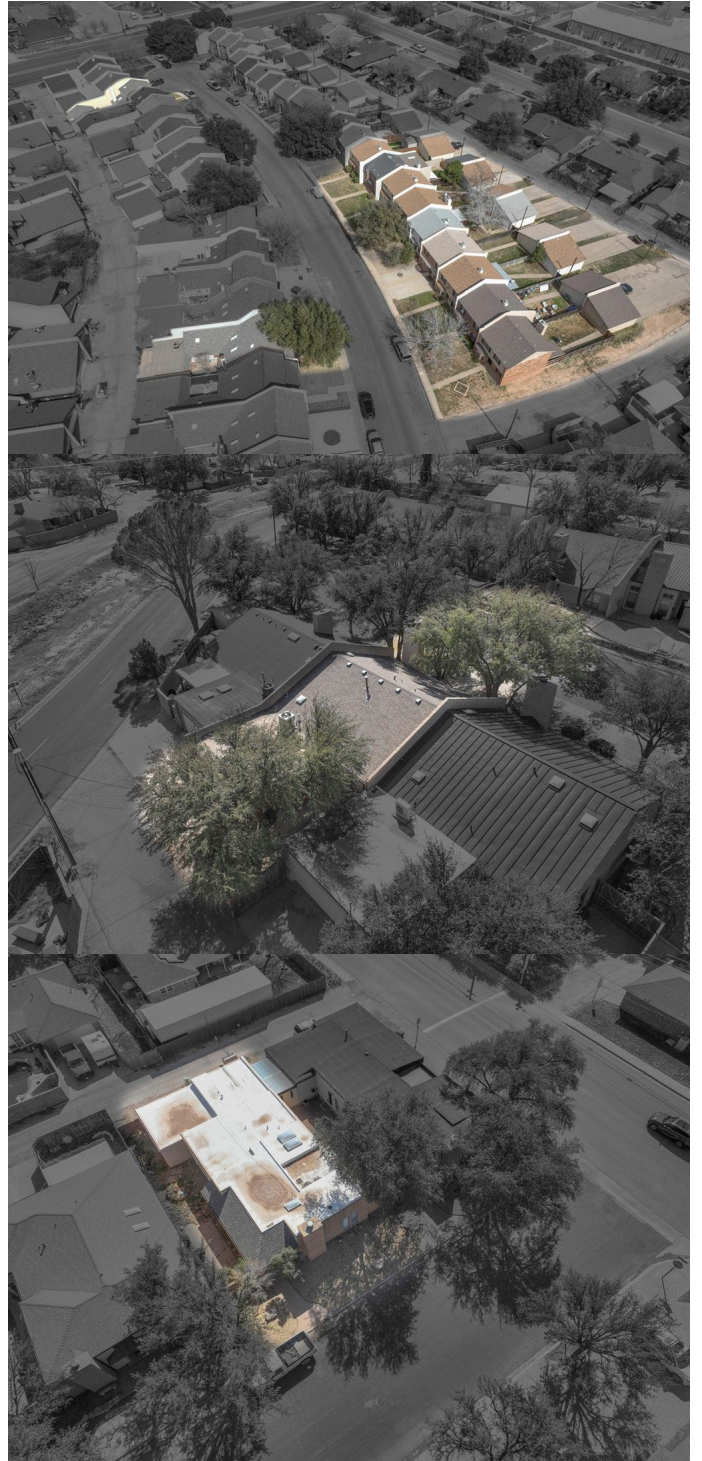
Built in 1982

Essential Information

MLS® #	50075307
Price	\$10,440,000
Square Footage	69,516
Acres	0.00
Year Built	1982
Type	Commercial Sale
Status	Active

Community Information

Address	3206 Preston Dr
Subdivision	N/A
City	Midland
County	Midland



State	TX
Zip Code	79707

Amenities

Parking	Paved Parking
---------	---------------

Interior

Heating	Central, Gas
---------	--------------

Cooling	Electric
---------	----------

Exterior

Roof	Composition
------	-------------

Additional Information

Days on Market	115
----------------	-----

The data relating to real estate for sale on this web site comes in part from the Internet Data exchange ("IDX") program of the Permian Basin Board Of Realtors Inc. IDX information is provided exclusively for consumers' personal, non-commercial use and may not be used for any purpose other than to identify prospective properties consumers may be interested in purchasing. Information deemed reliable but not guaranteed. Copyright 2025 Permian Basin Board Of Realtors Inc. All rights reserved.