

\$1,664,428 - 225 Corporate Dr, Midland

MLS® #50075465

\$1,664,428

Bedroom, Bathroom, 168,571 sqft
Commercial Sale on 3.87 Acres

N/A, Midland, TX

3.8 AC tract city lot with the potential to be a 8+/- AC tract! Close proximity to Loop 250, off N. Big Spring St., & minutes from downtown Midland. Situated in the Alley Village area, home to many desirable local upscale restaurants, shopping, coffee shops, and entertainment. Close proximity to Clay Desta Plaza & several apartment complex's offers prime positioning for commercial use development. This corner lot is zoned PD for potential future development with all city utilities available.

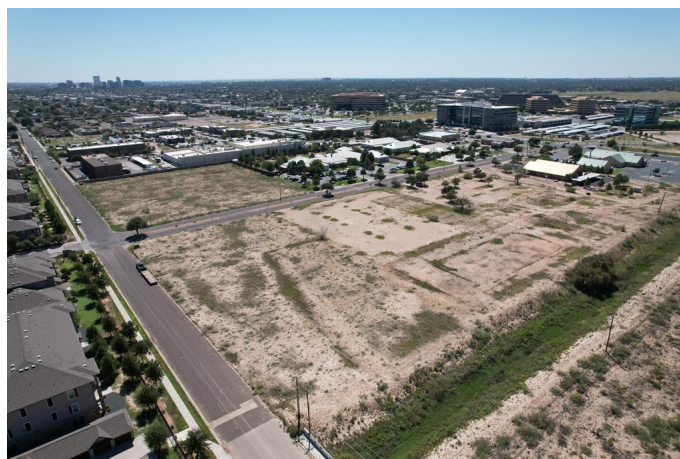
Built in 2024

Essential Information

MLS® #	50075465
Price	\$1,664,428
Square Footage	168,571
Acres	3.87
Year Built	2024
Type	Commercial Sale
Status	Active

Community Information

Address	225 Corporate Dr
Subdivision	N/A
City	Midland
County	Midland
State	TX
Zip Code	79705



Amenities

Parking Other-See Remarks

Interior

Heating None

Cooling None

Exterior

Roof Other

Additional Information

Days on Market 19

The data relating to real estate for sale on this web site comes in part from the Internet Data exchange ("IDX") program of the Permian Basin Board Of Realtors Inc. IDX information is provided exclusively for consumers' personal, non-commercial use and may not be used for any purpose other than to identify prospective properties consumers may be interested in purchasing. Information deemed reliable but not guaranteed. Copyright 2025 Permian Basin Board Of Realtors Inc. All rights reserved.